

Operations Optimizer

Data sheet

KEY BENEFITS

- » Analyzes data from more than 30 million water, gas, and electricity meters, in both AMI and legacy environments, at more than 20 leading utilities.
- » Can be accessed both in the office and in the field. Position Tracking enables use of map views in the field from a truck mount, laptop or tablet computer.
- » Leverages big data technologies to maximize algorithmic performance, even with long data retention and increasing data-set sizes.
- » Supports any combination of electricity, water, gas, automated meter reading (AMR), AMI, and manually read meters in the service territory.
- » Data integration completed in days, not months.
- » Includes proprietary analytics and machine-learning tools for modeling, analyzing, and presenting vast amounts of data from various utility systems.
- » Improves business-process efficiency with advanced workflow tools for ranking, prioritizing, filtering, and automating workflows. Score-based algorithms rank events and cases to help users prioritize actions and optimize resource allocation.
- » Role-based security allows customers to control access to every piece of data and take actions based on configurable programs and roles.

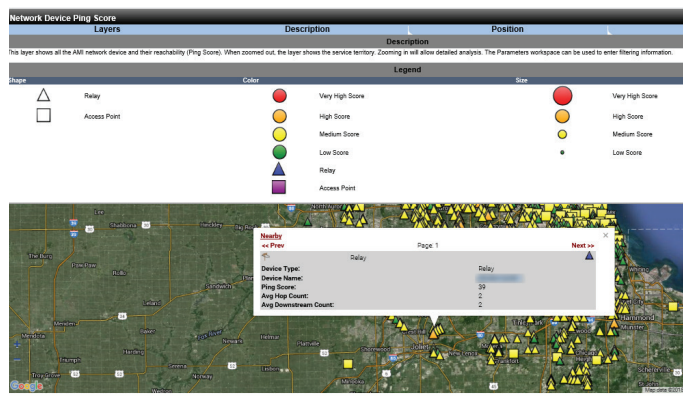
OPTIMIZE OPERATIONS WITH INTEGRATED DATA, ANALYTICS, AND ACTIONABLE SOFTWARE

Operations Optimizer is a powerful analytics solution that enables utilities to improve operational efficiency and develop business processes and workflows by leveraging insights from a variety of internal and external data sources. Both list views and map views provide the ability to view, search, filter, and aggregate data through an easy-to-use interface.

FOUR MODULES SUPPORT KEY BUSINESS FUNCTIONS

Operation Optimizer's four distinct modules support a variety of immediate use cases and are also configurable to support future needs.

AMI Operations: Identifies and diagnoses meter data collection and delivery problems, monitors for meter safety issues, and manages AMI deployments. For example, AMI Operations can identify failed meters, hop count irregularities, unreachable meters and high-temperature meter trends before they reach a critical state.

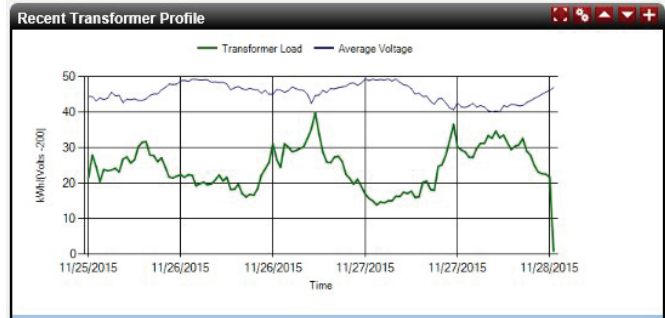
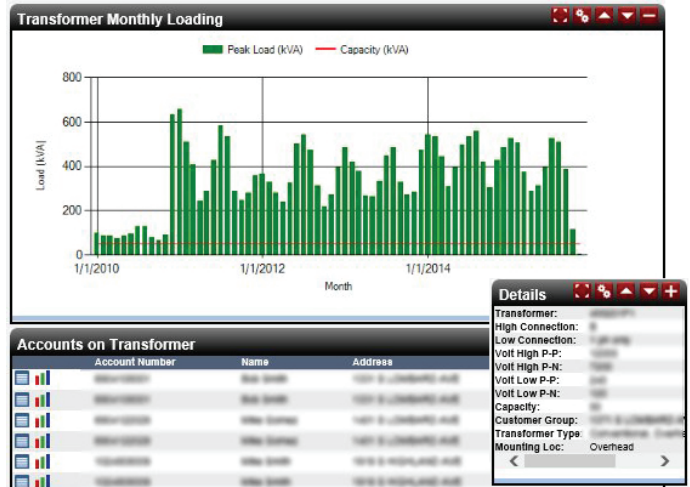


Ping scores are shown in this example map view in the AMI Operations module. Ping scores refer to the reachability of the Access Points and Relays in the AMI network.

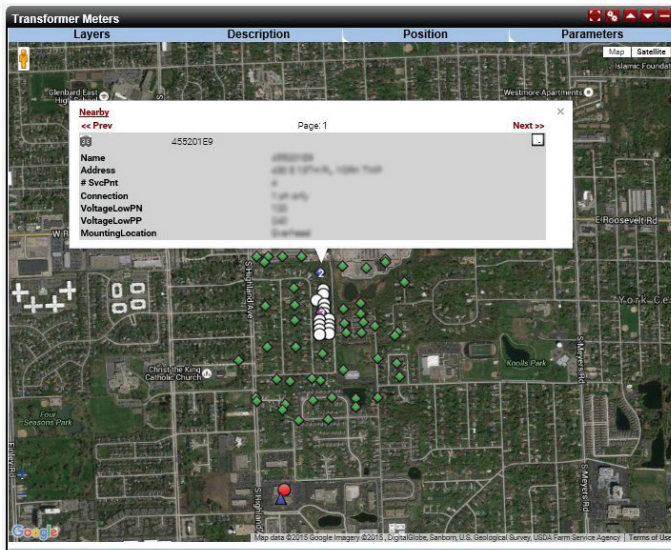
Grid Operations: Aggregates and analyzes metering loads across the distribution system in order to identify asset risks and connectivity mismatches, support load planning, and estimate technical losses.

Revenue Assurance: Protects against revenue leakage by identifying theft and other non-technical losses by analyzing feeder imbalances and identifying tampered or bypassed meters. Revenue Assurance also provides workflow, field investigation and collection tracking capacities.

Customer Programs: Enables utilities to better plan, deliver and measure demand-side management programs. Customer Programs includes smart meter disaggregation analytics that operate on hourly consumption to identify usage of major appliances at a premise in order to enhance customer segmentation and targeting.



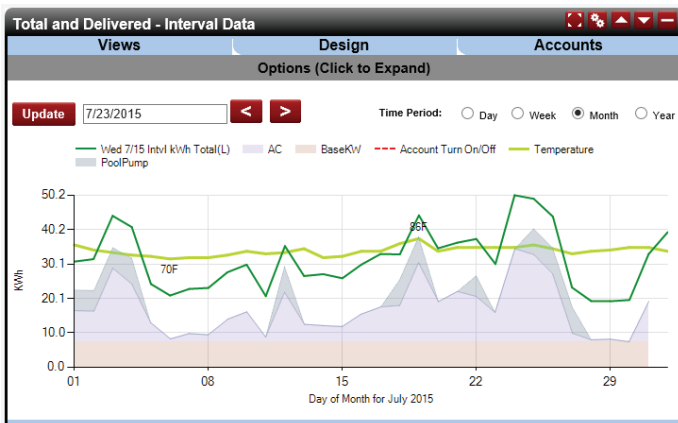
Example charts show monthly loading, connected accounts, and recent profile information for a selected transformer in the Grid Operations module.



Transformer meter locations are shown in this example map view in the Grid Operations module.

The 'Revenue Assurance - Analyze - Detect - Non-Residential Electric' list view displays a table of accounts with various detection metrics. The table has columns for Views, Actions, Filter, Query, and Locate. The data rows include Account Number, Name, and several numerical columns representing different detection metrics. A 'Get Count' button is visible at the bottom right.

This example list view in the Revenue Assurance module shows the results of detection analysis by account.



Example chart shows interval data and the hourly energy use for major appliances for a day in the Customer Programs module.



Join us in creating a more **resourceful world**.
To learn more visit **itron.com**

CORPORATE HQ

2111 North Molter Road
Liberty Lake, WA 99019 USA

Phone: 1.800.635.5461

Fax: 1.509.891.3355

While Itron strives to make the content of its marketing materials as timely and accurate as possible, Itron makes no claims, promises, or guarantees about the accuracy, completeness, or adequacy of, and expressly disclaims liability for errors and omissions in, such materials. No warranty of any kind, implied, expressed, or statutory, including but not limited to the warranties of non-infringement of third party rights, title, merchantability, and fitness for a particular purpose, is given with respect to the content of these marketing materials. © Copyright 2018 Itron. All rights reserved. 101654SP-01 05/18